

License installation for DeskArtes Expert Series Import Package 8.0



Index

<i>License installation for DeskArtes Expert Series Import Package 8.0.....</i>	<i>1</i>
<i>About this document.....</i>	<i>3</i>
<i>License types.....</i>	<i>3</i>
<i>Node-locked license installation for the Import Package.....</i>	<i>4</i>
Installing the program packages.....	4
Installing the node-locked Import Package license.....	4
<i>Floating license installation for the Import Package.....</i>	<i>6</i>
Installing the program packages.....	6
Installing the floating license for the Import Package.....	6
Client side configuration for the floating license.....	9
Environment variables.....	9
<i>Handling the environment variables in Windows.....</i>	<i>10</i>

About this document

This document explains the operations needed to install a license for the DeskArtes Expert Series Import Package version 8.0.

The Import Package is an add-on package for the DeskArtes Expert Series programs (3Data Expert, Dimensions Expert, View Expert and Design Expert) containing import translators for additional file formats (Catia V4, Catia V5, Pro/E, Step and Unigraphics). It has to be installed on top of one of the DeskArtes Expert Series program packages.

The instructions in this document are written for the DeskArtes Expert Series Import Package version 8.0, which can be installed on top of the version 8.0 of the Expert Series programs. The Import Package 8.0 uses FLEXlm version 8 license tools.

License types

The DeskArtes Expert Series Import Package 8.0 can be configured to use a node-locked or a floating license. The choice of the license type depends on the machine and network configuration at the user site and on the number of the translators needed at the same time.

The **node-locked licenses** are installed on each machine separately and they allow the use of Import Package translators only on those specific machines.

The **floating license** constrains only the number of the Import Package translators running at the same time. The translators can be run on any machine having a network connection to the machine running the floating license server.

Node-locked license installation for the Import Package

Installing the program packages

Before installing the license for the Import Package, you must have already installed the DeskArtes Expert Series program package (for example 3Data Expert 8.0) that you are going to use to run the Import Package translators, and also the Import Package itself. Furthermore you need to have the normal node-locked DeskArtes license installed for the Expert Series program package you use.

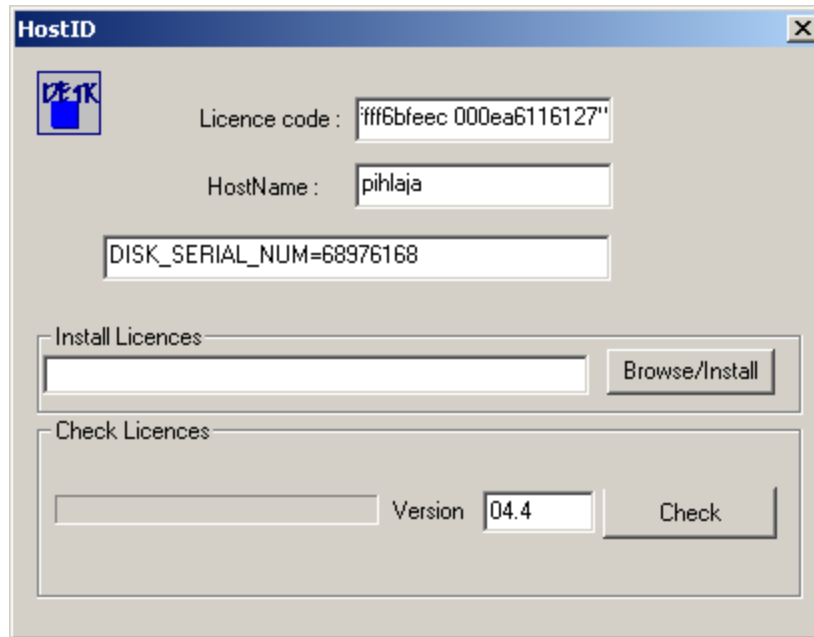
If you don't have those installed yet, do first the following:

1. Install the Expert Series program package (for example 3Data Expert 8.0).
2. Install the Import Package 8.0 on top of the program package.
3. Run the program and select the "**Help->About DeskArtes...**" command to get the system ID number of your machine for the license.
4. Send the system ID to DeskArtes to get the normal node-locked DeskArtes license code.
5. When you receive the normal DeskArtes license code, install it by running the program, selecting the "**Help->About DeskArtes...**" command and copying the code in the "license string" field.

Installing the node-locked Import Package license

The installation of a node-locked license for the Import Package consists of the following steps:

1. Install the `hostide.exe` tool. The installation package `DATAKITHOSTID.exe` is found in the directory `DatakitHostid` under the 3Data Expert installation directory.
2. Start the `hostid.exe` from Windows start menu `DATAKIT > Host ID License Manager`



3. Send the information of the “**License code**”, “**HostName**” and “**DISK_SERIAL_NUM**” fields to DeskArtes for creating the license.
4. When you receive the license file, run the “**hostid.exe**” again and use the “**Browse/Install**” button to select the license file.

Typically the name of a node-locked license file is something like

“**00FFFF6BFEEC_08-dec-2005_11-dec-2005.lic**”

which contains the system ID and the start and expire dates of the license.

The contents of a node-locked license file look like the following:

```
FEATURE DataExchangeDemo DATAKIT 05.4 11-dec-2005 uncounted \  
  HOSTID=00ffff6bfeec START=08-dec-2005 SIGN=C84EE0C46C4E  
FEATURE dtkCatiaV5_3dToIges DATAKIT 05.4 11-dec-2005 uncounted \  
  HOSTID=00ffff6bfeec START=08-dec-2005 SIGN=B9F2BF3488BC  
FEATURE dtkCatiaV5_3dToIgesFeat DATAKIT 05.4 11-dec-2005 uncounted \  
  HOSTID=00ffff6bfeec START=08-dec-2005 SIGN=AE0CA942992E  
FEATURE dtkCatiaV5_3dToIgesFdt DATAKIT 05.4 11-dec-2005 uncounted \  
  HOSTID=00ffff6bfeec START=08-dec-2005 SIGN=A8838C8A6AAE  
FEATURE dtkCatiaV5_3dToStl DATAKIT 05.4 11-dec-2005 uncounted \  
  HOSTID=00ffff6bfeec START=08-dec-2005 SIGN=E90ACECE4A98
```

The license file contains one FEATURE line for each module that it enables.

5. After installing the license you can press “**Check**” button to check the available licenses. The result will be stored in the **lmcheck04.4.log** file in the same directory where the “**hostid.exe**” is located.

Floating license installation for the Import Package

Installing the program packages

Before installing a floating license for the Import Package you must have already installed the DeskArtes Expert Series program package (for example 3Data Expert 8.0) that you are going to use to run the Import Package filters. Also the Import Package has to be already installed on top of the program package.

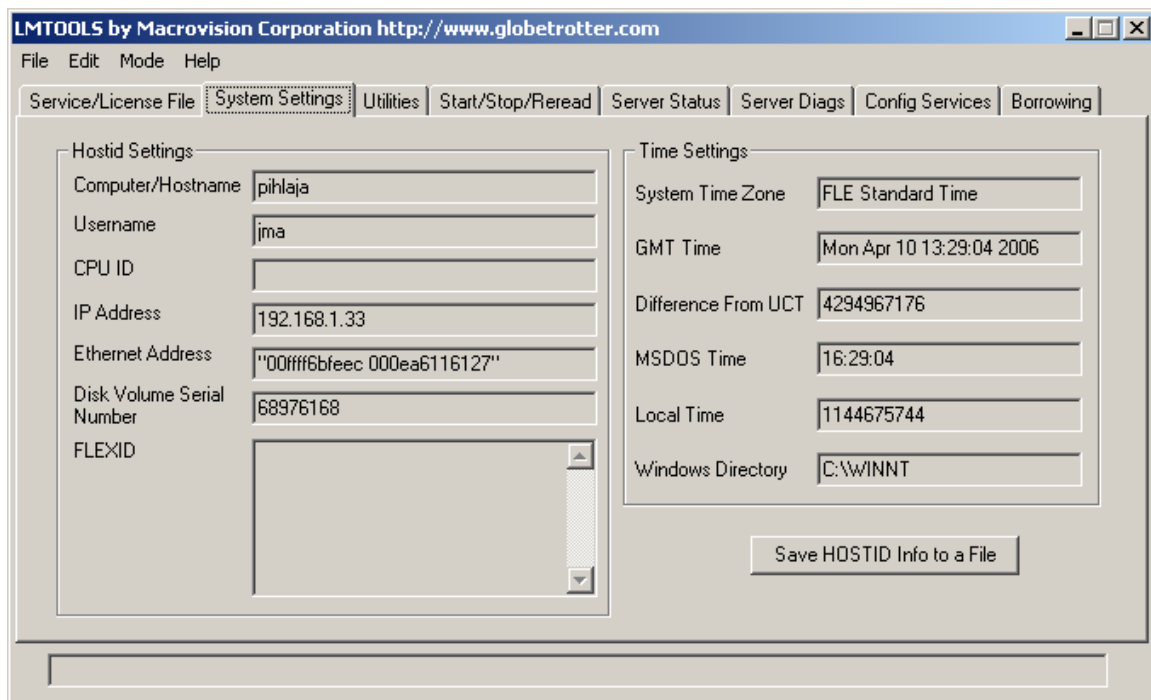
The program package and the Import Package have to be installed on all the client machines. The floating license has to be installed only on the license server machine.

Installing the floating license for the Import Package

The floating license installation is done only on the license server machine of the floating license system.

The installation of a floating license for the Import Package consists of the following steps:

1. Install the Import Package License Server files to the license server machine. The installation package **IPLicenseServerSetup.exe** is found in the directory *IPLicenseServer* under the 3Data Expert installation directory. If you do not have 3Data Expert installed on the license server machine, you can copy the installation package from one of the client machines.
2. Run the **Imtools.exe** program found in the directory where you installed the Import Package License Server files. (The default path of the installation directory is "C:\program Files\Import Package License Server".)
3. Select the "System Settings" page



4. Write down the values of the “**Computer/Hostname**”, the “**IP address**”, the “**Ethernet Address**” and the “**Disk Volume Serial Number**” fields.

For example:

Computer/Hostname	=	pihlaja
IP address	=	192.168.1.33
Ethernet Address	=	"00ffff6bfeec 000ea6116127"
Disk Volume Serial Number	=	68976168

You can also get the same information directly into a text file by clicking the “**Save HOSTIDInfo to a File**” button.

5. Send the information to DeskArtes.
6. When you receive the license file, copy it to the installation directory of the Import Package License Server. (default: “C:\program Files\Import Package License Server”).

Typically the name of a floating license file is similar to a node-locked license file

“**00ffff6bfeec_03-jan-2006_08-jan-2006.lic**”

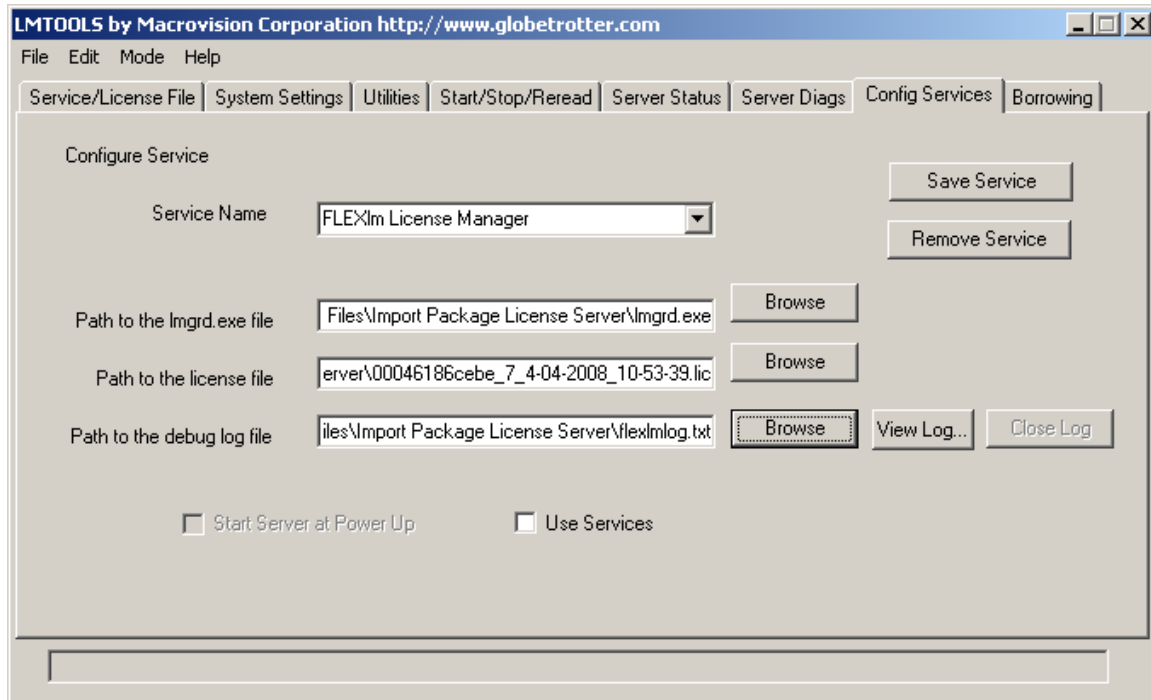
The name consists of the system ID and the start and expire dates of the license.

You can also check the contents of the license file by opening it to Windows Notepad. The floating license file should look like the following:

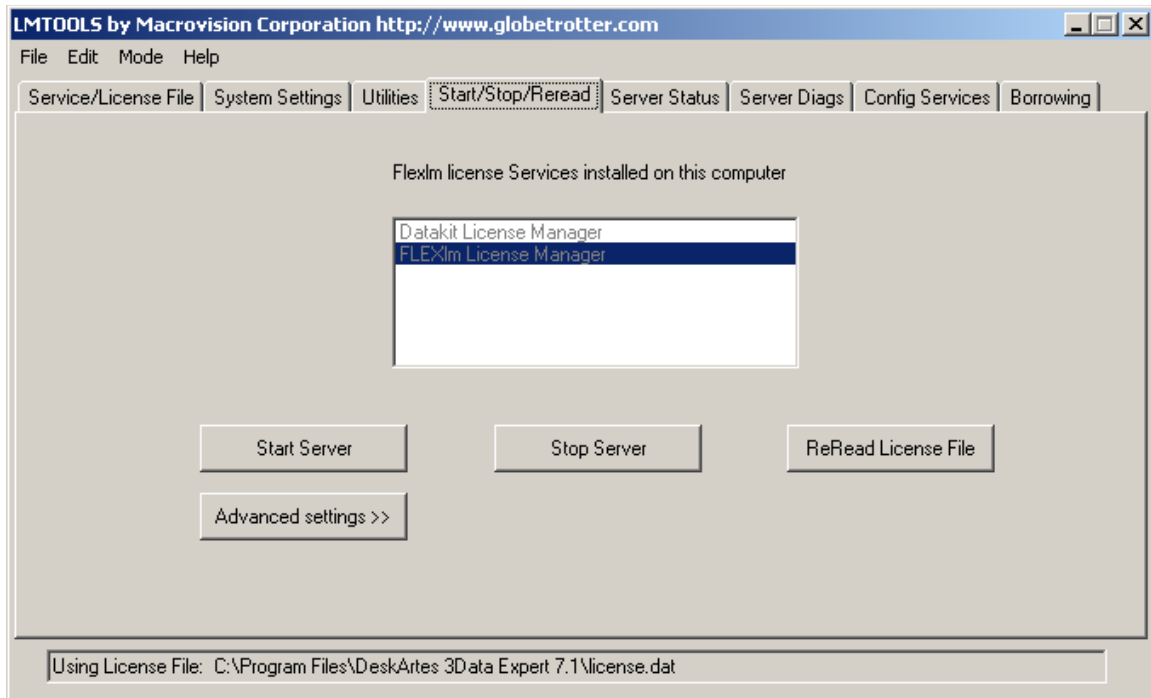
```
SERVER pihlaja 00ffff6bfeec
VENDOR DATAKIT
USE_SERVER
FEATURE DataExchangeDemo_Flx DATAKIT 06.1 08-jan-2006 1 \
  START=03-jan-2006 SIGN=C9A728DA5BBA
FEATURE dtkCatiaV5_3dToIges_Flx DATAKIT 06.1 08-jan-2006 1 \
  START=03-jan-2006 SIGN=ACC918AE6B3A
FEATURE dtkCatiaV5_3dToIgesFeat_Flx DATAKIT 06.1 08-jan-2006 1 \
  START=03-jan-2006 SIGN=CAC1ACEC435E
FEATURE dtkCatiaV5_3dToIgesFdt_Flx DATAKIT 06.1 08-jan-2006 1 \
  START=03-jan-2006 SIGN=BABB03E8BFEA
FEATURE dtkCatiaV5_2dToIges_Flx DATAKIT 06.1 08-jan-2006 1 \
  START=03-jan-2006 SIGN=BFF40A9EFF88
```

There is first few lines to define the license server and the vendor daemon, and then one FEATURE line for each module that the license enables.

7. Run the **Imtools.exe** program again.
8. Select the “**Config Services**” page.



9. Set the value of the **“Path to the lmgrd.exe file”** field to the path of the lmgrd.exe in the installation directory of the Import Package License Server (for example: “C:\program Files\Import Package License Server\lmgrd.exe”).
10. Set the value of the **“Path to the license file”** field to the path of the license file in the installation directory of the Import Package License Server (for example: “C:\program Files\Import Package License Server\00ffff6bfec_03-jan-2006_08-jan-2006.lic”).
11. Set the value of the **“Path to the debug log file”** field to the path of a file where you want the license server to write the log messages (for example: “C:\program Files\Import Package License Server\flexlmlog.txt”).
12. Select the **“Start/Stop/Reread”** page in the **lmtools.exe**.



13. Press the **“Start Server”** button to start the license server.

Client side configuration for using the floating license

Environment variables

Add the following environment variable and set its value for each of the client machines where Import Package translators are run:

```
LM_LICENSE_FILE    1700@licserver
```

Here "licserver" must be the hostname of the machine where you are running the floating license server.

Note: If you don't know how to check/change environment variables in Windows, see the "Handling environment variables in Windows" section below.

Handling the environment variables in Windows

The environment variable values can be listed and changed in "Environment Variables" dialog in Windows. The "Environment Variables" dialog is opened slightly differently in different Windows versions.

Windows Vista:

Start->Control Panel (Classic View): System: Advanced system settings: Advanced: Environment Variables

Windows XP:

Start->Control Panel: System: Advanced: Environment Variables

Windows 2000:

Start->Settings->Control Panel: System: Advanced: Environment Variables

Windows NT:

Start->Settings->Control Panel: System: Environment

Also the procedure for changing values is different between Windows versions.

To change a value of a variable do the following:

Windows Vista, XP or 2000:

1. Select the variable you want to change from list
2. Click the "Edit" button.
3. Change the value in the value field.
4. Click the "OK" button to update the new value in the list.
5. Click "OK" button to commit the changes.

Windows NT:

6. Select the variable from the list so that you can see it in the "Variable" and "Value" fields below.
7. Change the value in the value field.
8. Click "Set" button to update the new value in the list.
9. Click "OK" button to commit the changes.