

License installation for DeskArtes Expert Series Import Package 7.1



Index

<i>License installation for DeskArtes Expert Series Import Package 7.1</i>	1
<i>About this document</i>	3
<i>License types</i>	3
<i>Node-locked license installation for the Import Package</i>	4
Installing the program packages	4
Installing the node-locked Import Package license	4
<i>Floating license installation for the Import Package</i>	6
Installing the program packages	6
Installing the floating license for the Import Package	6

About this document

This document explains the operations needed to install a license for the DeskArtes Expert Series Import Package version 7.1.

The Import Package is an add-on package for the DeskArtes Expert Series programs (3Data Expert, Design Expert, Render Expert and View Expert) containing import translators for additional file formats (Catia V4, Catia V5, Pro/E, Step and Unigraphics). It has to be installed on top of one of the DeskArtes Expert Series program packages.

The instructions in this document are written for the DeskArtes Expert Series Import Package version 7.1, which can be installed on top of the version 7.1 of the Expert Series programs. The Import Package 7.1 uses FLEXlm version 8 license tools.

License types

The DeskArtes Expert Series Import Package 7.1 can be configured to use a node-locked or a floating license. The choice of the license type depends on the machine and network configuration at the user site and on the number of the translators needed at the same time. The license types of the Import Package and the corresponding Expert Series program package have to be the same.

The **node-locked licenses** are installed on each machine separately and they allow the usage of Import Package translators only on those specific machines.

The **floating license** constrains only the number of the Import Package translators running at the same time. The translators can be run on any machine having a network connection to the machine running the floating license server.

Node-locked license installation for the Import Package

Installing the program packages

Before installing the license for the Import Package, you must have already installed the DeskArtes Expert Series program package (for example 3Data Expert 7.1) that you are going to use to run the Import Package filters, and also the Import Package itself. Furthermore you need to have the normal node-locked DeskArtes license installed for the Expert Series program package you use.

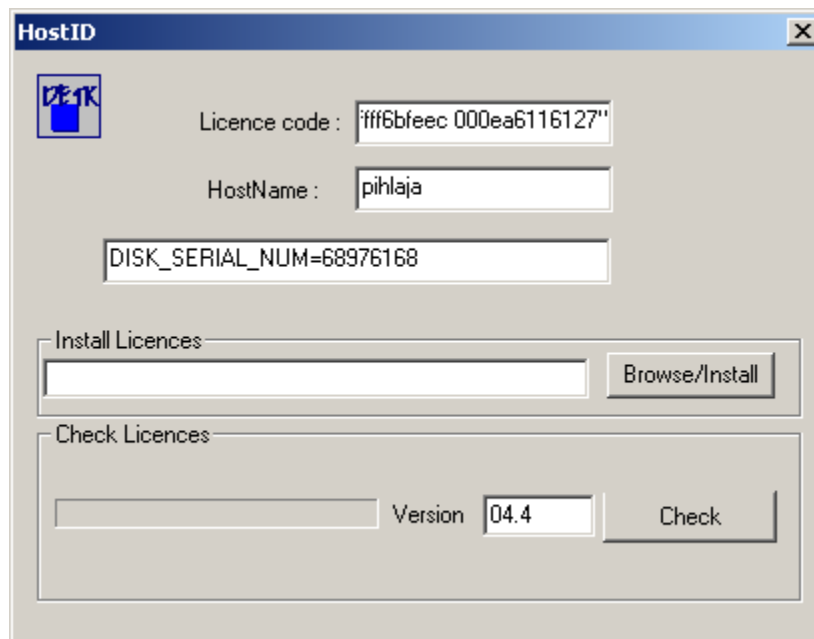
If you don't have those installed yet, do first the following:

1. Install the Expert Series program package (for example 3Data Expert 7.1).
2. Install the Import Package 7.1 on top of the program package.
3. Run the program and select the "**Help->About DeskArtes...**" command to get the system ID number of your machine for the license.
4. Send the system ID to DeskArtes to get the normal node-locked DeskArtes license code.
5. When you receive the normal DeskArtes license code, install it by running the program, selecting the "**Help->About DeskArtes...**" command and copying the code in the "license string" field.

Installing the node-locked Import Package license

The installation of a node-locked license for the Import Package consists of the following steps:

1. Run the **hostid.exe** program found in the installation directory of the Expert Series program package after installing the Import Package there. (The default path of the installation directory is for example for the 3Data Expert 7.1 "C:\program Files\DeskArtes 3Data Expert 7.1".)



2. Send the information of the “**License code**”, “**HostName**” and “**DISK_SERIAL_NUM**” fields to DeskArtes for creating the license.
3. When you receive the license file, run the “**hostid.exe**” again and use the “**Browse/Install**” button to select the license file.

Typically the name of a node-locked license file is something like

“**00FFFF6BFEEC_08-dec-2005_11-dec-2005.lic**”

which contains the system ID and the start and expire dates of the license.

The contents of a node-locked license file look like the following:

```
FEATURE DataExchangeDemo DATAKIT 05.4 11-dec-2005 uncounted \  
  HOSTID=00ffff6bfeec START=08-dec-2005 SIGN=C84EE0C46C4E  
FEATURE dtkCatiaV5_3dToIges DATAKIT 05.4 11-dec-2005 uncounted \  
  HOSTID=00ffff6bfeec START=08-dec-2005 SIGN=B9F2BF3488BC  
FEATURE dtkCatiaV5_3dToIgesFeat DATAKIT 05.4 11-dec-2005 uncounted \  
  HOSTID=00ffff6bfeec START=08-dec-2005 SIGN=AE0CA942992E  
FEATURE dtkCatiaV5_3dToIgesFdt DATAKIT 05.4 11-dec-2005 uncounted \  
  HOSTID=00ffff6bfeec START=08-dec-2005 SIGN=A8838C8A6AAE  
FEATURE dtkCatiaV5_3dToStl DATAKIT 05.4 11-dec-2005 uncounted \  
  HOSTID=00ffff6bfeec START=08-dec-2005 SIGN=E90ACECE4A98
```

The license file contains one FEATURE line for each module that it enables.

4. After installing the license you can press “**Check**” button to check the available licenses. The result will be stored in the **lmcheck04.4.log** file in the same directory where the “**hostid.exe**” is located.

Floating license installation for the Import Package

Installing the program packages

Before installing the floating license for the Import Package you must have already installed the DeskArtes Expert Series program package (for example 3Data Expert 7.1) that you are going to use to run the Import Package filters, and configured it to use the floating license system. Also the Import Package has to be already installed on top of the program package.

The program package and the Import Package have to be installed on the license server machine and all the client machines. The floating license has to be installed only on the license server machine.

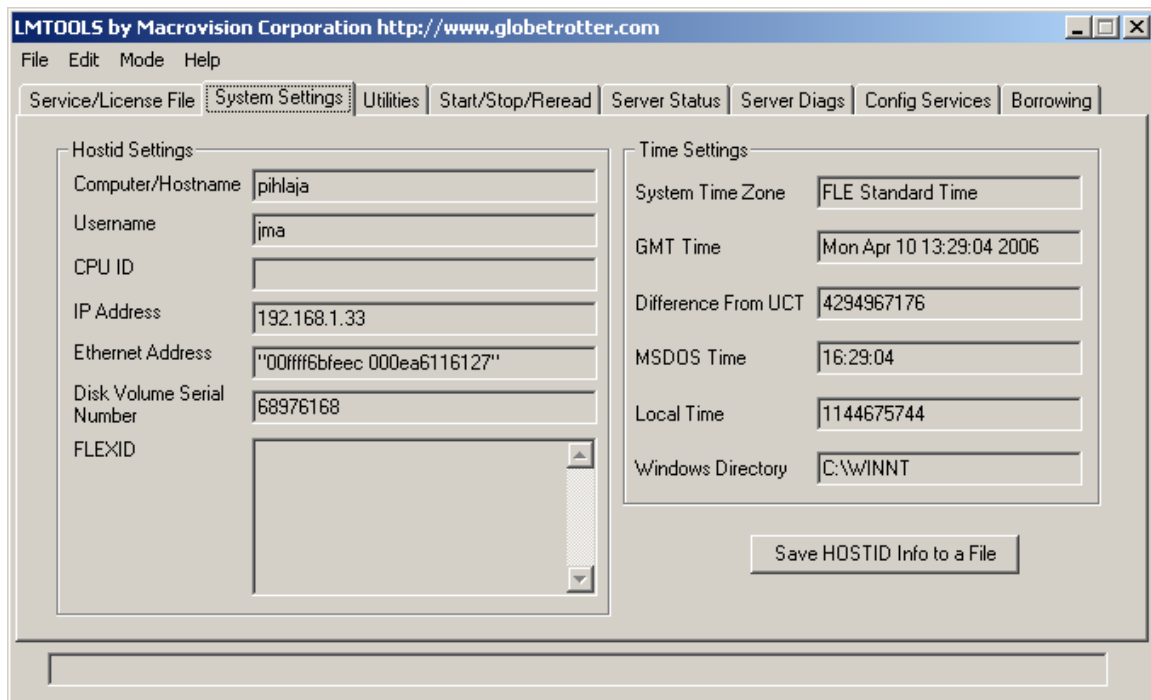
Further instructions for installing and configuring the DeskArtes Expert Series 7.1 programs for using the FLEXIm floating license system are found in a separate document “**Floating license system installation for DeskArtes Expert Series 7.1 programs**”.

Installing the floating license for the Import Package

The floating license installation is done only on the license server machine of the floating license system.

The installation of a floating license for the Import Package consists of the following steps:

1. Run the **lmtools.exe** program found in the installation directory of the Expert Series program package after installing the Import Package. (The default path of the installation directory is for example for the 3Data Expert 7.1 “C:\program Files\DeskArtes 3Data Expert 7.1”.)
2. Select the “**System Settings**” page



3. Write down the values of the “**Computer/Hostname**”, the “**IP address**”, the “**Ethernet Address**” and the “**Disk Volume Serial Number**” fields.

For example:

Computer/Hostname	=	pihlaja
IP address	=	192.168.1.33
Ethernet Address	=	"00ffff6bfeec 000ea6116127"
Disk Volume Serial Number	=	68976168

You can also get the same information directly into a text file by clicking the “**Save HOSTIDInfo to a File**” button.

4. Send the information to DeskArtes.
5. When you receive the license file, check its contents by opening it with Windows Notepad.

Typically the name of a floating license file is similar to a node-locked license file

“**00ffff6bfeec_03-jan-2006_08-jan-2006.lic**”

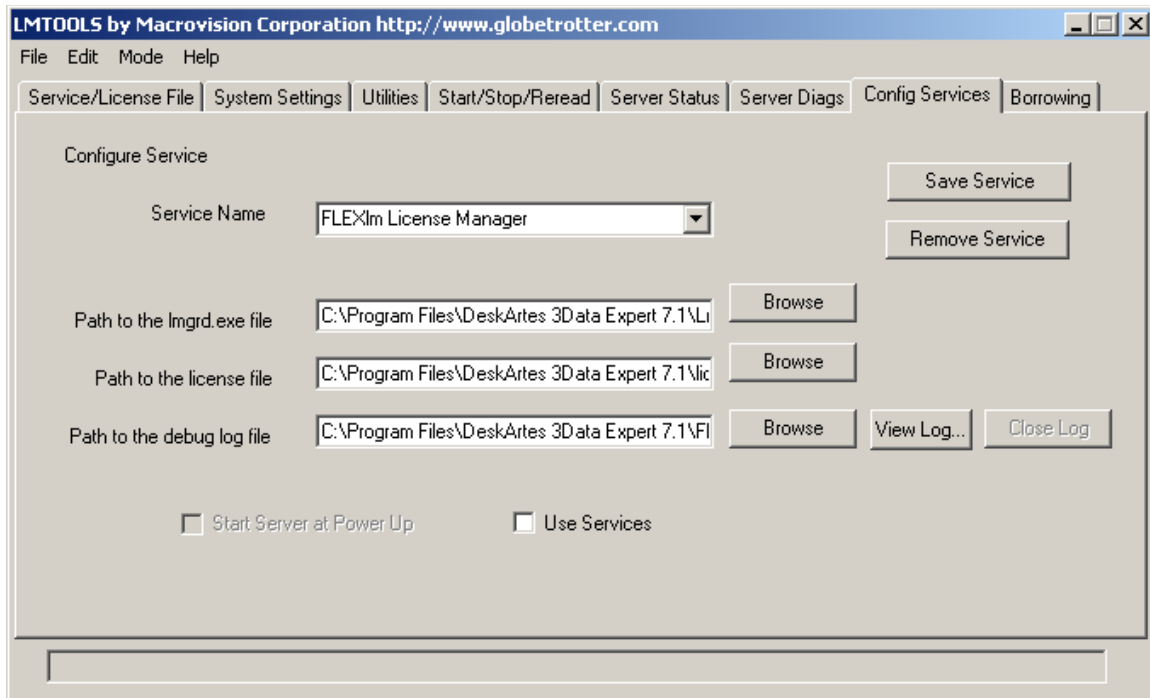
The name consists of the system ID and the start and expire dates of the license.

The contents of a floating license file look like the following:

```
SERVER pihlaja 00ffff6bfeec
VENDOR DATAKIT
USE_SERVER
FEATURE DataExchangeDemo_Flx DATAKIT 06.1 08-jan-2006 1 \
    START=03-jan-2006 SIGN=C9A728DA5BBA
FEATURE dtkCatiaV5_3dToIges_Flx DATAKIT 06.1 08-jan-2006 1 \
    START=03-jan-2006 SIGN=ACC918AE6B3A
FEATURE dtkCatiaV5_3dToIgesFeat_Flx DATAKIT 06.1 08-jan-2006 1 \
    START=03-jan-2006 SIGN=CAC1ACEC435E
FEATURE dtkCatiaV5_3dToIgesFdt_Flx DATAKIT 06.1 08-jan-2006 1 \
    START=03-jan-2006 SIGN=BABB03E8BFEA
FEATURE dtkCatiaV5_2dToIges_Flx DATAKIT 06.1 08-jan-2006 1 \
    START=03-jan-2006 SIGN=BFF40A9EFF88
```

There is first few lines to define the license server and the vendor daemon, and then one FEATURE line for each module that the license enables.

6. Run the **lmtools.exe** program again to find out where the floating license file for the DeskArtes Expert Series programs is located.
7. Select the “**Config Services**” page.



The path of the license file for Expert Series programs is found in the “**Path to the license file**” field.

8. Open this DeskArtes Expert Series license file into Windows Notepad program.

Typically the floating license file for DeskArtes Expert series looks like the following:

```
SERVER pihlaja 00ffff6bfeec 1700

DAEMON dalicd C:\PROGRA~1\DESKAR~4.0\dalicd.exe

FEATURE trans dalicd 7.000 31-dec-2006 1 1D3377CDEA1A7EDD4149 ""
FEATURE visplus dalicd 7.000 31-dec-2006 1 9D03A72D807705CED218 ""
FEATURE clitool dalicd 7.000 31-dec-2006 1 BDD3377DB75F5448F2B8 ""
FEATURE igs2vda dalicd 7.000 31-dec-2006 1 BDD327FD7C2D762BDC02 ""
FEATURE stlcut dalicd 7.000 31-dec-2006 1 0D8327ED7DA15EE49357 ""
FEATURE stlredu dalicd 7.000 31-dec-2006 1 0D23A74D39AFDE904791 ""
FEATURE stlrefine dalicd 7.000 31-dec-2006 1 6D73D72DB0F493B2CA4A ""
FEATURE tr2slice dalicd 7.000 31-dec-2006 1 7DF3E74DE8B0152C9F29 ""
FEATURE tr2stl dalicd 7.000 31-dec-2006 1 9D83476DA7C25CDE2D36 ""
FEATURE trbool dalicd 7.000 31-dec-2006 1 0D33976D64125CC78179 ""
FEATURE troffs dalicd 7.000 31-dec-2006 1 1DE3371D77A65CD0965E ""
FEATURE trsupp dalicd 7.000 31-dec-2006 1 DD5387DD79D55CAA3294 ""
FEATURE vda2igs dalicd 7.000 31-dec-2006 1 ADF3574D3DC84B210A3C ""
FEATURE vda2tr dalicd 7.000 31-dec-2006 1 2D83A79DB60F5CEAAD21 ""
FEATURE shelling dalicd 7.000 31-dec-2006 1 ADE3976D13558F549A35 ""
FEATURE vdainput dalicd 7.000 31-dec-2006 1 CD63A7DDFAF4A0283463 ""
FEATURE stlcheck dalicd 7.000 31-dec-2006 1 7DD3B74D19586E504A50 ""
FEATURE surfcheck dalicd 7.000 31-dec-2006 1 2D53B74D3B8290DA4DB3 ""
FEATURE encrypt dalicd 7.000 31-dec-2006 1 3DA3676DCA09EAABFBBD ""
FEATURE ncpath dalicd 7.000 31-dec-2006 1 5D6377BD0BEE9E997164 ""
```


- Copy all the other lines except the SERVER line from the floating license for the Import package and add them to the end of this DeskArtes Expert Series floating license file.

The resulting combined floating license file will then look like the following:

```
SERVER pihlaja 00ffff6bfeec 1700

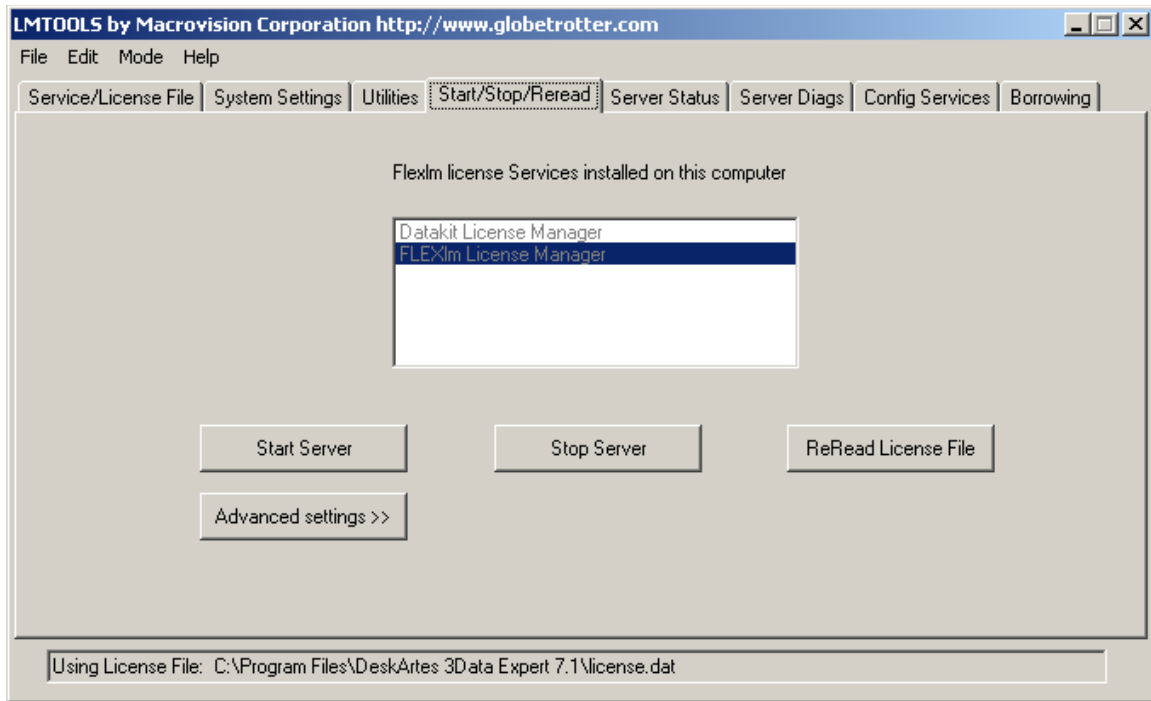
DAEMON dalicd C:\PROGRA~1\DESKAR~4.0\dalicd.exe

FEATURE trans dalicd 7.000 31-dec-2006 1 1D3377CDEA1A7EDD4149 ""
FEATURE visplus dalicd 7.000 31-dec-2006 1 9D03A72D807705CED218 ""
FEATURE clitool dalicd 7.000 31-dec-2006 1 BDD3377DB75F5448F2B8 ""
FEATURE igs2vda dalicd 7.000 31-dec-2006 1 BDD327FD7C2D762BDC02 ""
FEATURE stlcut dalicd 7.000 31-dec-2006 1 0D8327ED7DA15EE49357 ""
FEATURE stlredu dalicd 7.000 31-dec-2006 1 0D23A74D39AFDE904791 ""
FEATURE stlrefine dalicd 7.000 31-dec-2006 1 6D73D72DB0F493B2CA4A ""
FEATURE tr2slice dalicd 7.000 31-dec-2006 1 7DF3E74DE8B0152C9F29 ""
FEATURE tr2stl dalicd 7.000 31-dec-2006 1 9D83476DA7C25CDE2D36 ""
FEATURE trbool dalicd 7.000 31-dec-2006 1 0D33976D64125CC78179 ""
FEATURE troffs dalicd 7.000 31-dec-2006 1 1DE3371D77A65CD0965E ""
FEATURE trsupp dalicd 7.000 31-dec-2006 1 DD5387DD79D55CAA3294 ""
FEATURE vda2igs dalicd 7.000 31-dec-2006 1 ADF3574D3DC84B210A3C ""
FEATURE vda2tr dalicd 7.000 31-dec-2006 1 2D83A79DB60F5CEAAD21 ""
FEATURE shelling dalicd 7.000 31-dec-2006 1 ADE3976D13558F549A35 ""
FEATURE vdainput dalicd 7.000 31-dec-2006 1 CD63A7DDFAF4A0283463 ""
FEATURE stlcheck dalicd 7.000 31-dec-2006 1 7DD3B74D19586E504A50 ""
FEATURE surfcheck dalicd 7.000 31-dec-2006 1 2D53B74D3B8290DA4DB3 ""
FEATURE encrypt dalicd 7.000 31-dec-2006 1 3DA3676DCA09EAABFBBB ""
FEATURE ncpath dalicd 7.000 31-dec-2006 1 5D6377BD0BEE9E997164 ""

VENDOR DATAKIT
USE_SERVER
FEATURE DataExchangeDemo_Flx DATAKIT 06.1 08-jan-2006 1 \
    START=03-jan-2006 SIGN=C9A728DA5BBA
FEATURE dtkCatiaV5_3dToIges_Flx DATAKIT 06.1 08-jan-2006 1 \
    START=03-jan-2006 SIGN=ACC918AE6B3A
FEATURE dtkCatiaV5_3dToIgesFeat_Flx DATAKIT 06.1 08-jan-2006 1 \
    START=03-jan-2006 SIGN=CAC1ACEC435E
FEATURE dtkCatiaV5_3dToIgesFdt_Flx DATAKIT 06.1 08-jan-2006 1 \
    START=03-jan-2006 SIGN=BABB03E8BFEA
FEATURE dtkCatiaV5_2dToIges_Flx DATAKIT 06.1 08-jan-2006 1 \
    START=03-jan-2006 SIGN=BFF40A9EFF88
```

- Save the combined license file in the Notepad.

- Select the "Start/Stop/Reread" page in the **lmttools.exe**.



12. Make the license server to read again the license file by pressing the “**ReRead License File**” button.